

Hemstitch

Overview

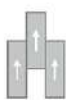
Feature	Description
Collection	Sakiori
Style	Hemstitch (CR710)
Product Type	LVT
Size	9.25 in x 59.25 in
Construction	Woven LVT
Gauge	3 mm
Total Thickness	3 mm
Finish	M-Force™
Edge Profile	Squared
Installation	Glue Down
Installation Method	Brick Ashlar, Half Lap, Herringbone, Random
Recommended Adhesive	M95.0, M99, MS160, M700 Plus, or Total Bond Adhesive



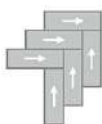
Recommended Installation Methods



Brick Ashlar



Half Lap



Herringbone



Random

Colorways



Nedoko

Color code: 753
Style number: CR710



Huipils

Color code: 868
Style number: CR710



Mosotho

Color code: 889
Style number: CR710



Jerga

Color code: 935
Style number: CR710



Lowveld

Color code: 979
Style number: CR710



Kapa

Color code: 729
Style number: CR710

Testing

Feature	Description
Classification	(ASTM F1700) Class III, Type B, Embossed
Squareness	(ASTM F2421) ± 0.10 in
Size and Tolerance	(ASTM F2421) ± 0.016 in
Thickness	(ASTM F386) $\pm .005$ in
Flexibility	(ASTM F137) Passes
Dimensional Stability	(ASTM F2199) Passes
Static Load Limit	(ASTM F970) 1500 psi
Residual Indentation	(ASTM F1914) Passes
Resistance to Chemicals	(ASTM F925) Passes
Resistance to Light	(ASTM F1515) Passes
Resistance to Heat	(ASTM F1514) Passes
Radiant Flux	(ASTM E648) Class 1
Smoke Density	(ASTM E662) = 450
Lightfastness	(ASTM F1515) Passes

Sustainability

Feature	Description
Embodied Carbon	11.9 kg CO ₂ e/sq m ²
Carbon Handprint	-12.5 kg CO ₂ e/sq m ²
Beyond Carbon Neutral	-0.595
EPD	EPD Vinyl Tile
Material Health	Free of Orthophthalates and Heavy Metals
LEED	Calculate LEED on Ecomedes
Mindful Materials	Participates in Mindful Materials Library
MindClick Rating	Achiever
Country of Origin	South Korea

Packaging

Feature	Description
Pieces per Carton	10
Weight per Piece	3.9369
Cartons Per Pallet	64
Square Feet per Carton	38.07
Weight per Carton	39.369

Warranties

Limited 15 Year M-Force Commercial Warranty