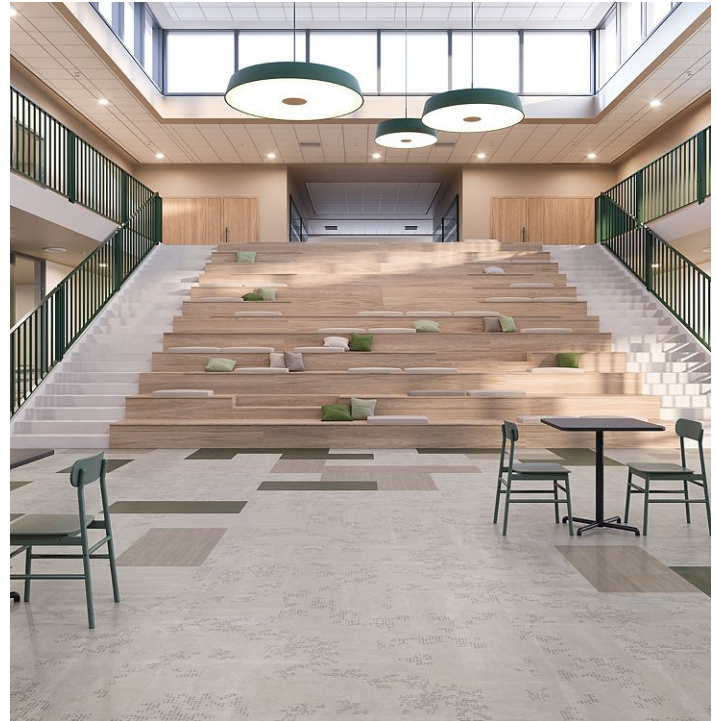


connectD 5.0

Overview

Feature	Description
Collection	Hot and Heavy II
Style	connectD 5.0 (C2116)
Product Type	LVT
Size	18 in x 36 in
Construction	Flexible LVT
Total Thickness	5.0 mm
Wear Layer	20 mil (0.5mm)
Finish	M-Force Ultra
Surface Profile	Overall
Edge Profile	Squared Edge
Installation	Loose Lay
Installation Method	Brick Ashlar, Monolithic, Random, Vertical Ashlar
Recommended Adhesive	M95.0, M99, MS160, M700 Plus, or Total Bond Adhesive



Recommended Installation Methods



Brick Ashlar



Monolithic



Random

Colorways



Cozy Linen

Color code: 250
Style number: C2116



Warm Haven

Color code: 270
Style number: C2116



Gentle Haze

Color code: 910
Style number: C2116



Balanced Charcoal

Color code: 940
Style number: C2116



Whispering Grey

Color code: 960
Style number: C2116



Grounded Black

Color code: 980
Style number: C2116

Colorways



Buff Ivory

Color code: 120
Style number: C2116



Tan Essence

Color code: 230
Style number: C2116

Testing

Feature	Description
Classification	(ASTM F1700) Type B - Embossed
Squareness	(ASTM F 2421) ± 0.10 " max
Size and Tolerance	(ASTM F2421) Passes
Thickness	(ASTM F386) ± 0.005 "
Flexibility	(ASTM F137) Passes
Dimensional Stability	(ASTM F2199) Passes
Static Load Limit	(ASTM F970) 1000 psi
Residual Indentation	(ASTM F1914) Passes
Resistance to Chemicals	(ASTM F925) Passes
Resistance to Light	(ASTM F1515) Passes
Resistance to Heat	(ASTM F1514) Passes
Radiant Flux	(ASTM E648) Class 1
Smoke Density	(ASTM E662) <450
Slip Resistance	NFSI B101.1/B101.3 Slip Resistant Certified
Wear Layer Thickness	20 mil (0.5mm)
Lightfastness	(ASTM F1515) Passes

Sustainability

Feature	Description
Embodied Carbon	6.43 kg CO2e/sq m2
Beyond Carbon Neutral	-0.58

Packaging

Feature	Description
Pieces per Carton	6
Weight per Piece	7.81
Cartons Per Pallet	46
Square Feet per Carton	27
Weight per Carton	46.860

Warranties

Limited 20 Year M-Force Ultra Commercial Warranty